

Connecting to your Node

Putty/Terminus/VPN

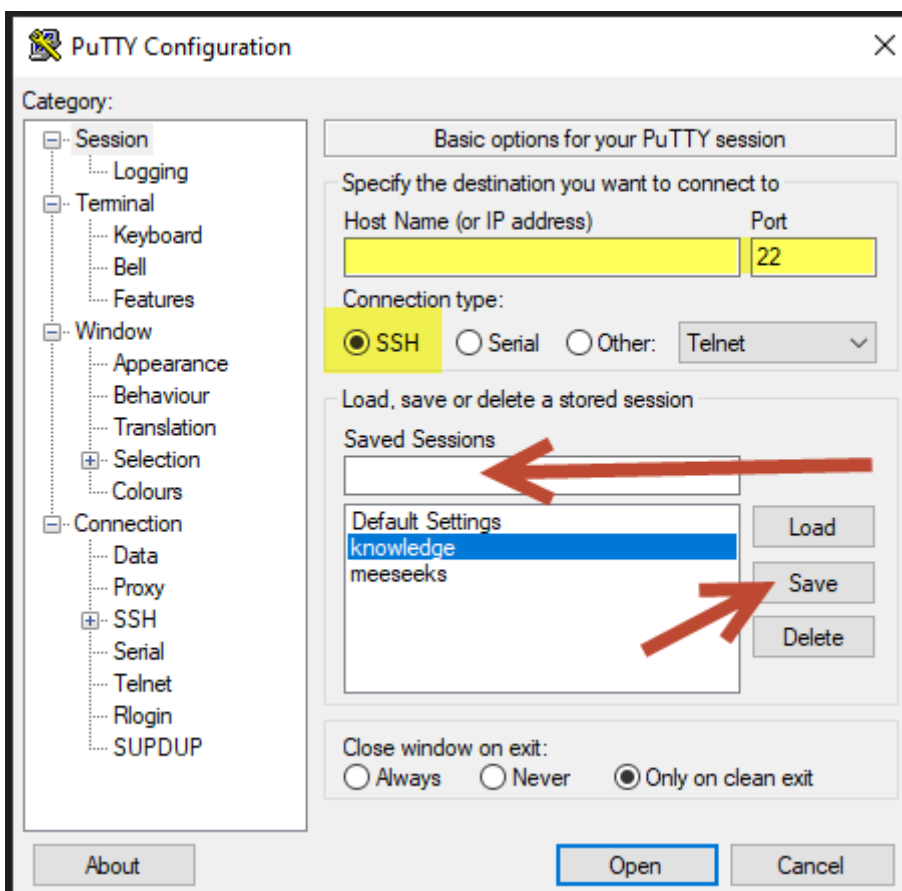
- [Putty - https://www.chiark.greenend.org.uk/~sgtatham/putty/latest.html](https://www.chiark.greenend.org.uk/~sgtatham/putty/latest.html)
- [WinSCP - \(SCP/FTP to/from your node to your PC\)](#)

Putty -

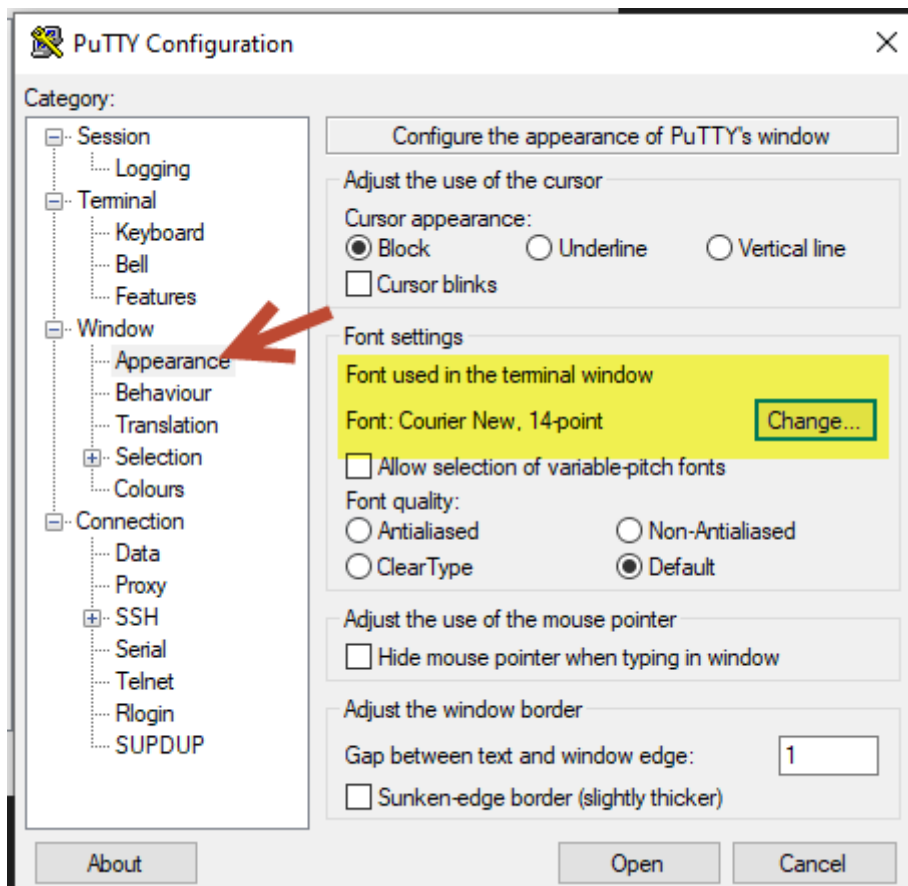
<https://www.chiark.greenend.org.uk/~sgtatham/putty/latest.html>

Launch Putty, put the _____ of your node and make sure _____ is select and the proper port. Normally _____ . Its normally a good idea to not use 22.

Don't forget to **save your session** after you fill in the IP address so you can reuse the profile.



If your getting old (like me) I need a bigger font. Click on Appearance and change to 14. don't forget to go back to session and save.

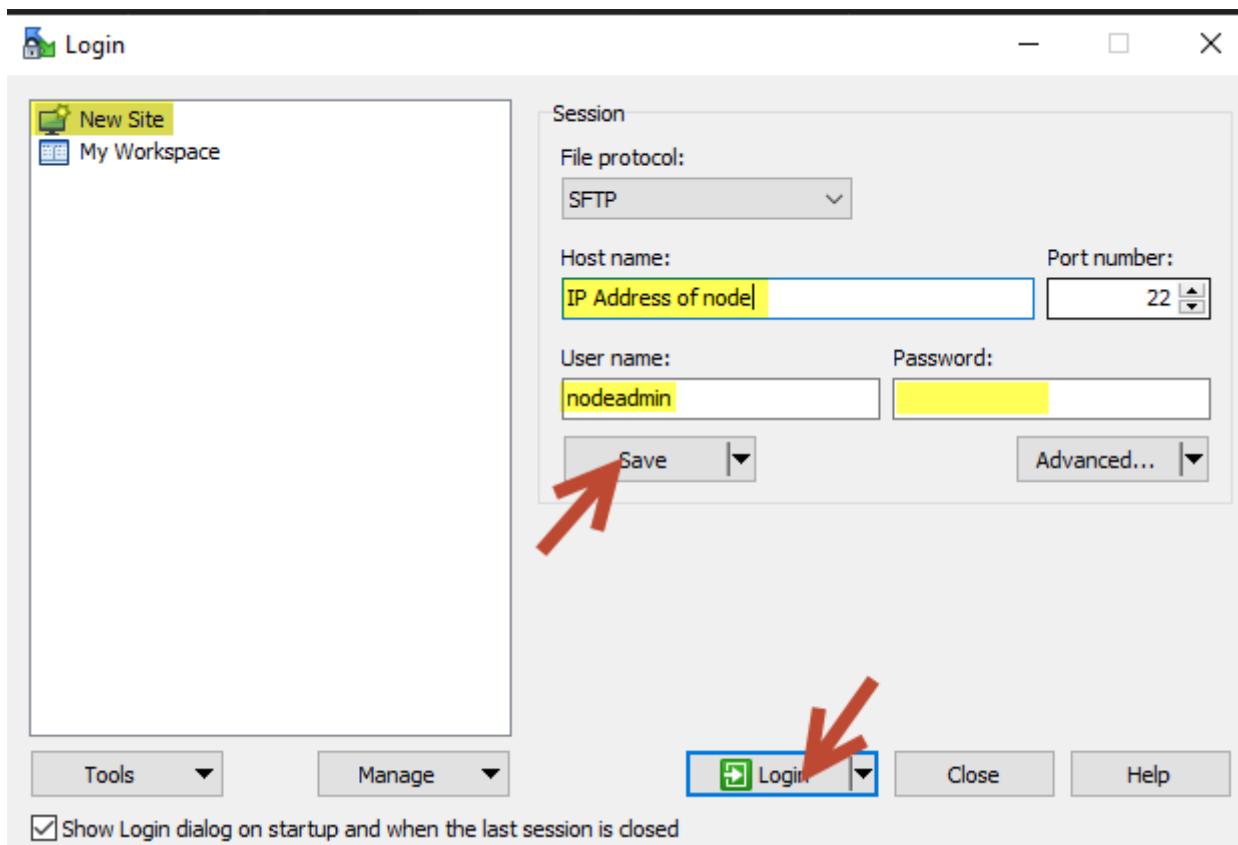


WinSCP - (SCP/FTP to/from your node to your PC)

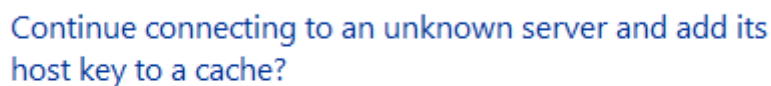
1. Download WinSCP Portable. This version requires no installation (which is always a good thing)

<https://winscp.net/eng/downloads.php>

2. Run WinSCP and select New Site, put all the details in (your port may be different but it uses the same SSH port you use to login normally to your node. Click SAVE first before login.



3. After login click Yes here (Only needed to do once) which add the key to your system.



The server's Ed25519 key details are:

```
Algorithm: ssh-ed25519 255
SHA-256: 9c:69:75:6d:d3:25:e9:65:2c:2a:fd:ff:7f:25:d5:95
MD5: 9c:69:75:6d:d3:25:e9:65:2c:2a:fd:ff:7f:25:d5:95
```

If you trust this host, press Yes. To connect without adding host key to the cache, press No. To abandon the connection press Cancel.

Copy key fingerprints to clipboard



Your PC to the left and the node to the right. Just double click on the .. on the right hand side to back up a folder and select where you want to go. I always save my data in /temp (which is temporary! so it will get cleaned). You just drag and drop files. Fairly simple.

