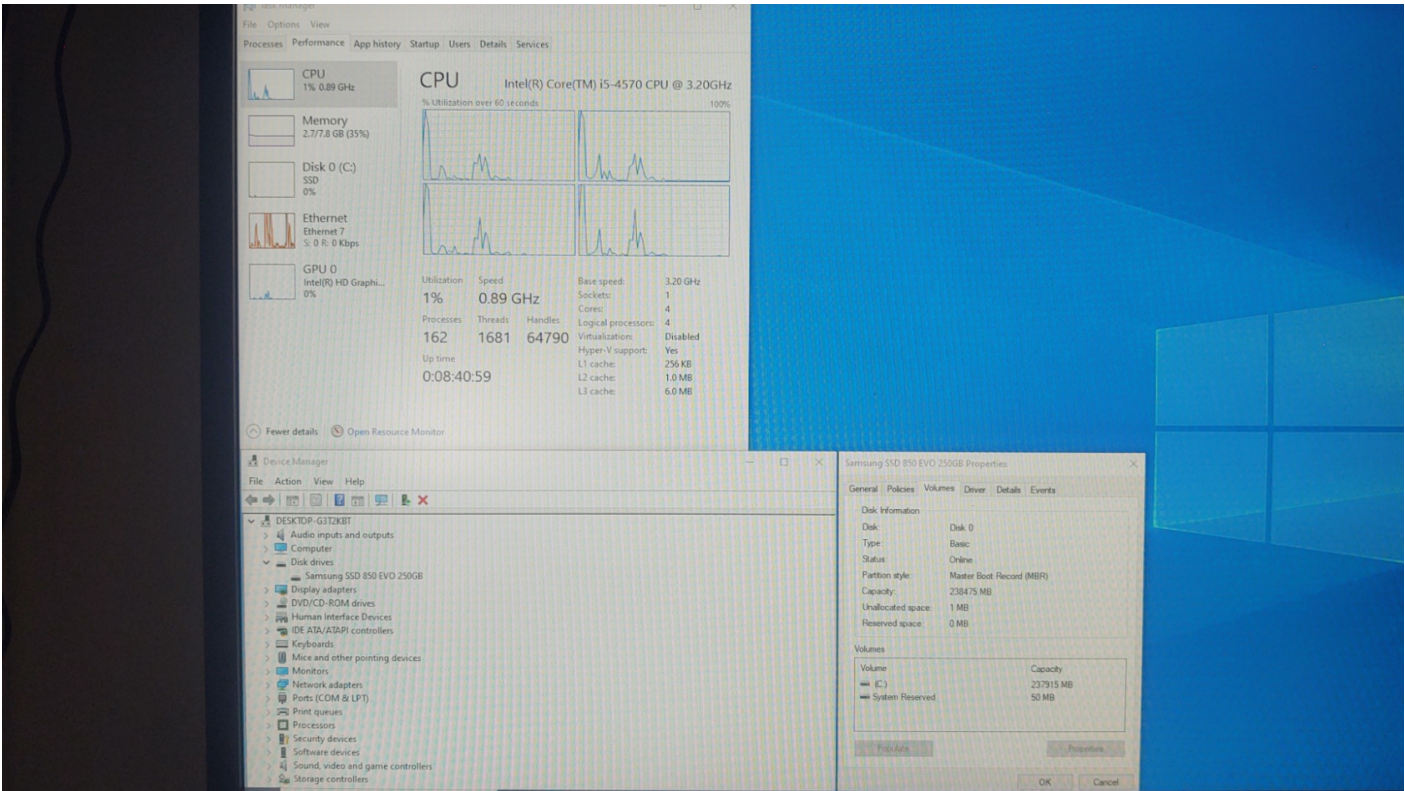


LD26 - ThinkCenter M93P / 8GB / 250GB SSD - NEEDS ACTIVATION!





System Manufacturer	LENOVO
System Product	10A8S11D00
System Version	ThinkCentre M93p

System Serial Number	MJ027B4A
System UUID	68ce3594-c1a7-11e4-8eb7-1f0c86bf1400
System Type	Type: Desktop
BIOS Vendor	LENOVO
BIOS Version	FBKTDAAUS
BIOS Date	12/11/2019
Motherboard Manufacturer	LENOVO
Motherboard Product Name	SHARKBAY
Motherboard Version	NOK
Motherboard Serial Number	
Motherboard Asset Tag	
CPU Manufacturer	Intel
CPU Version	Intel(R) Core(TM) i5-4570 CPU @ 3.20GHz
CPU Normal Speed	Current Speed: 3200 MHz
CPU Max Speed	Max Speed: 3800 MHz
Memory	7.57 GiB
Hard Disk Model	Samsung SSD 850 EVO 250GB
Hard Disk Firmware	EMT02B6Q
Hard Disk Serial Number	S2R5NX0H737850A
Chassis Manufacturer	To Be Filled By O.E.M.
Chassis Version	
Chassis Serial	MJ027B4A
Chassis Asset	MJ3YR0152767

Revision #1

Created 24 October 2024 14:23:12 by Andy

Updated 24 October 2024 14:25:21 by Andy