

NUC1 - 16GB - 256SSD - i7 -
NOLIC









Advanced



Intel® Desktop Board NUC7I7BNB

BIOS Version: BNKBL357.86A.0042.2017.0303.1854 [Update >](#)
Processor: Intel(R) Core(TM) i7-7567U CPU @ 3.50GHz

Total Memory: 16GB

System Date & Time: 8/16/2024 05:45:54PM [Change >](#)

Boot Order

Drag or +/- to sort boot priority. Double-click a device to boot from it now.

UEFI

Legacy

UEFI Boot

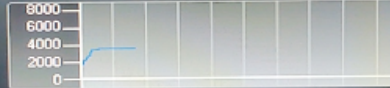
Boot Drive Order

No Boot Drive

Advanced

Performance Monitor

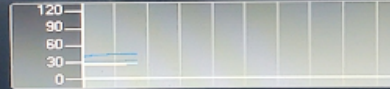
Fan Speeds (RPM)



CPU FAN

3629.00

Temperatures (C)



CPU Core Temp

46.00

Memory Temp

29.00

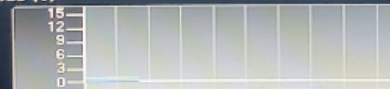
Motherboard Ambient

29.00

PCH Temp

34.00

Thresholds (V)



CPU I/O

0.96

SDRAM

1.19

CPU1 INPUT

1.01

F7 - Update BIOS

F9 - Load defaults

F10 - Save and exit

Ctrl-D - Add favorite item

Alt - Reveal shortcut keys

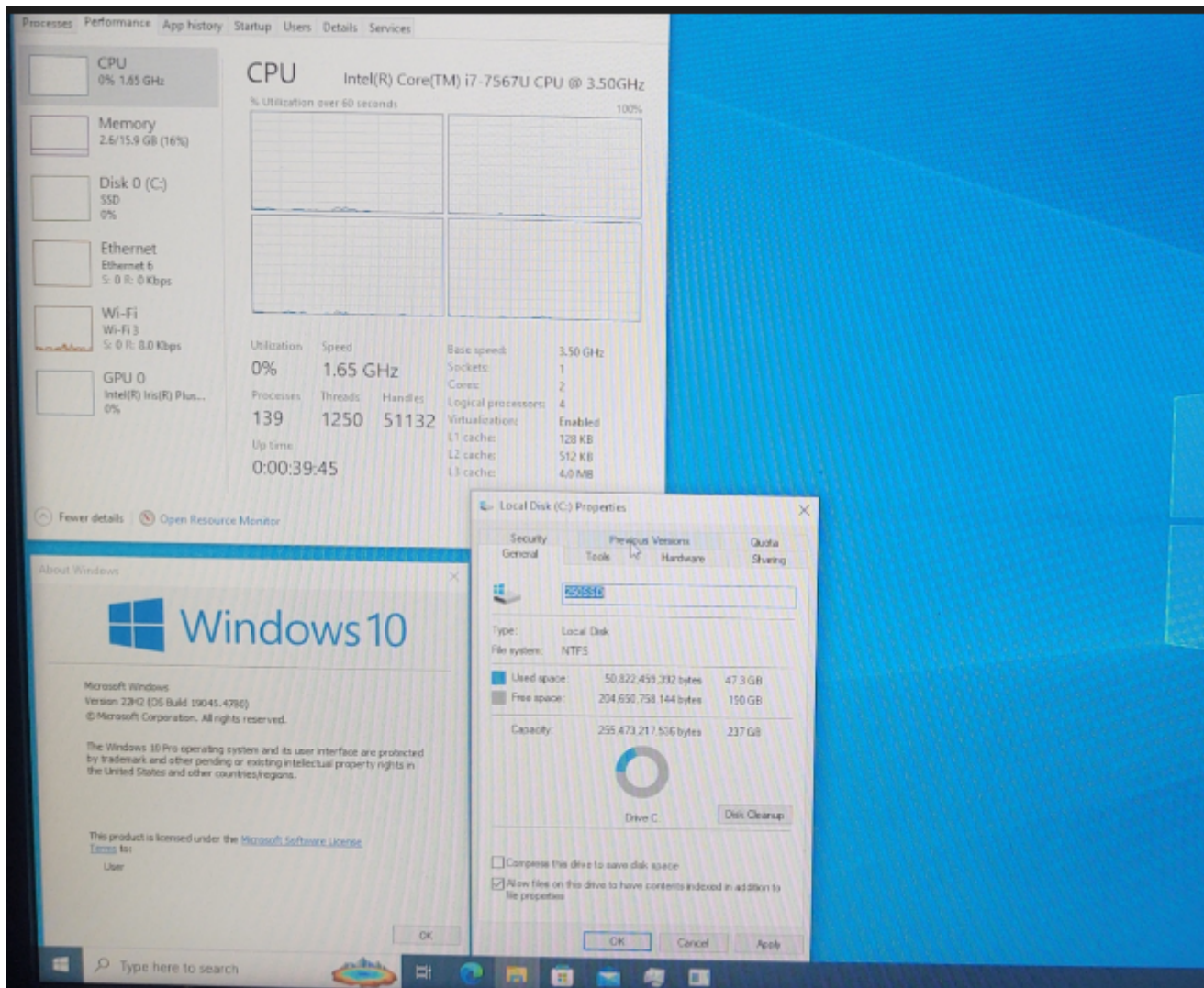
Ctrl-H - See all shortcuts

Tab - Next item

Esc - Discard and exit

Send us feedback at:
visualbios@intel.com
@VisualBIOS

2.2.23



Revision #2

Created 16 August 2024 22:48:08 by Andy

Updated 16 August 2024 22:52:28 by Andy