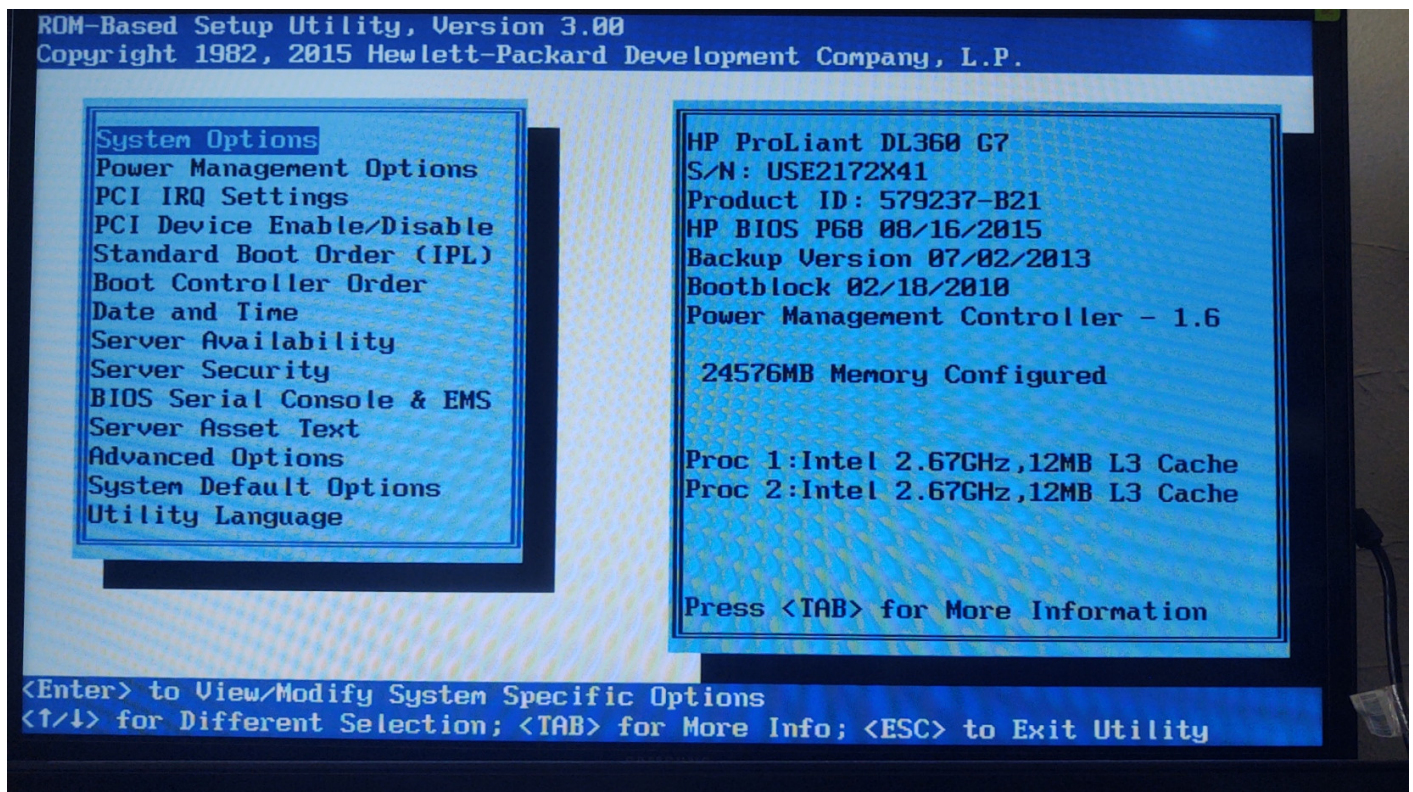


360-5 - G7 12 - Core / 24GB /
8 - 300GB (Raid 5)



ROM-Based Setup Utility, Version 3.00

Copyright 1982, 2015 Hewlett-Packard Development Company, L.P.

PCI Embedded	HP NC382i PCIe DP Multifunction 1Gb Adapter Port 1&2	Enabled
PCI Embedded	HP NC382i PCIe DP Multifunction 1Gb Adapter Port 2	Enabled
PCI Embedded	HP NC382i PCIe DP Multifunction 1Gb Adapter Port 3&4	Enabled
PCI Embedded	HP NC382i PCIe DP Multifunction 1Gb Adapter Port 4	Enabled
PCI Embedded	Intel(R) SATA Controller #1	Enabled
PCI Embedded	HP Smart Array P410i Controller	Enabled
PCI Slot 1	HP NC360T PCIe DP Gigabit Server Adapter	Enabled

<Enter> to View/Modify PCI Device Configurations

<↑/↓> for Different PCI Device; <ESC> to Close Menu

HP ProLiant

24 GB Installed

ProLiant System BIOS - P68 (08/16/2015)

Copyright 1982, 2015 Hewlett-Packard Development Company, L.P.

2 Processor(s) detected, 12 total cores enabled, Hyperthreading is enabled

Proc 1: Intel(R) Xeon(R) CPU X5650 @ 2.67GHz

Proc 2: Intel(R) Xeon(R) CPU X5650 @ 2.67GHz

QPI Speed: 6.4 GT/s

HP Power Profile Mode: Custom

Power Regulator Mode: Static High Performance

Advanced Memory Protection Mode: Advanced ECC Support

Redundant ROM Detected - This system contains a valid backup system ROM.

Inlet Ambient Temperature: 21C/69F

1615-Power Supply Failure or Power Supply Unplugged in Bay 2



Revision #10

Created 31 May 2024 19:48:53 by Andy

Updated 4 March 2025 18:50:15 by Andy