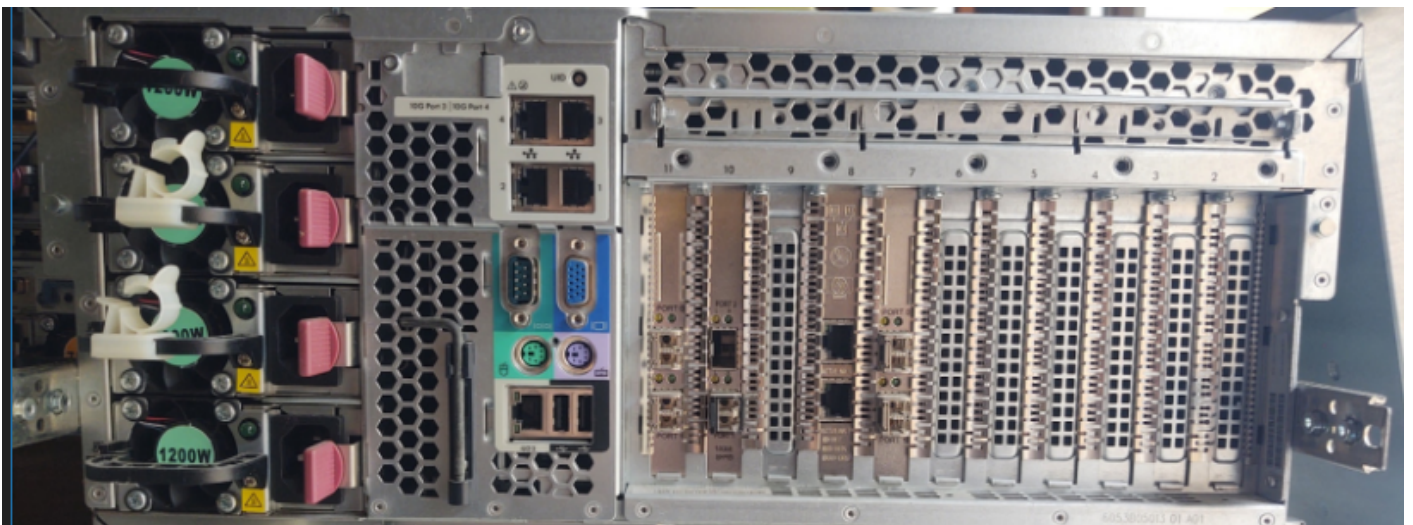


# 580-5 - HP 580 Gen 7 / 128GB / 8 - 146GB Drives

- 2 - Fiber Cards (8Gbit)
- 1 - 10GB FCoE adapter
- 1 - 1GB NIC



ROM-Based Setup Utility, Version 3.00  
Copyright 1982, 2015 Hewlett-Packard Development Company, L.P.

### System Options

Power Management Options  
PCI IRQ Settings  
PCI Device Enable/Disable  
Standard Boot Order (IPL)  
Boot Controller Order  
Date and Time  
Server Availability  
Server Security  
BIOS Serial Console & EMS  
Server Asset Text  
Advanced Options  
System Default Options  
Utility Language

HP ProLiant DL580 G7  
S/N: USE2172X3W  
Product ID: 643086-B21  
HP BIOS P65 08/16/2015  
Backup Version 10/01/2013  
Bootblock 01/18/2011  
Power Management Controller - 1.6

131072MB Memory Configured

Proc 1: Intel 2.27GHz, 24MB L3 Cache  
Proc 2: Intel 2.27GHz, 24MB L3 Cache  
Proc 3: Not Installed  
Proc 4: Not Installed

Press <TAB> for More Information

<Enter> to View/Modify System Specific Options  
<↑/↓> for Different Selection; <TAB> for more Info; <ESC> to Exit Utility

128 GB Installed

ProLiant System BIOS - P65 (08/16/2015)  
Copyright 1982, 2015 Hewlett-Packard Development Company, L.P.

2 Processor(s) detected, 20 total cores enabled, Hyperthreading is enabled  
Proc 1: Intel(R) Xeon(R) CPU E7- 4860 @ 2.27GHz  
Proc 2: Intel(R) Xeon(R) CPU E7- 4860 @ 2.27GHz  
FPI Speed: 6.4 GT/s  
Power Profile Mode: Maximum Performance  
Power Regulator Mode: Static High Performance

Revision #5

Created 10 October 2024 15:33:50 by Andy

Updated 16 November 2024 18:13:49 by Andy