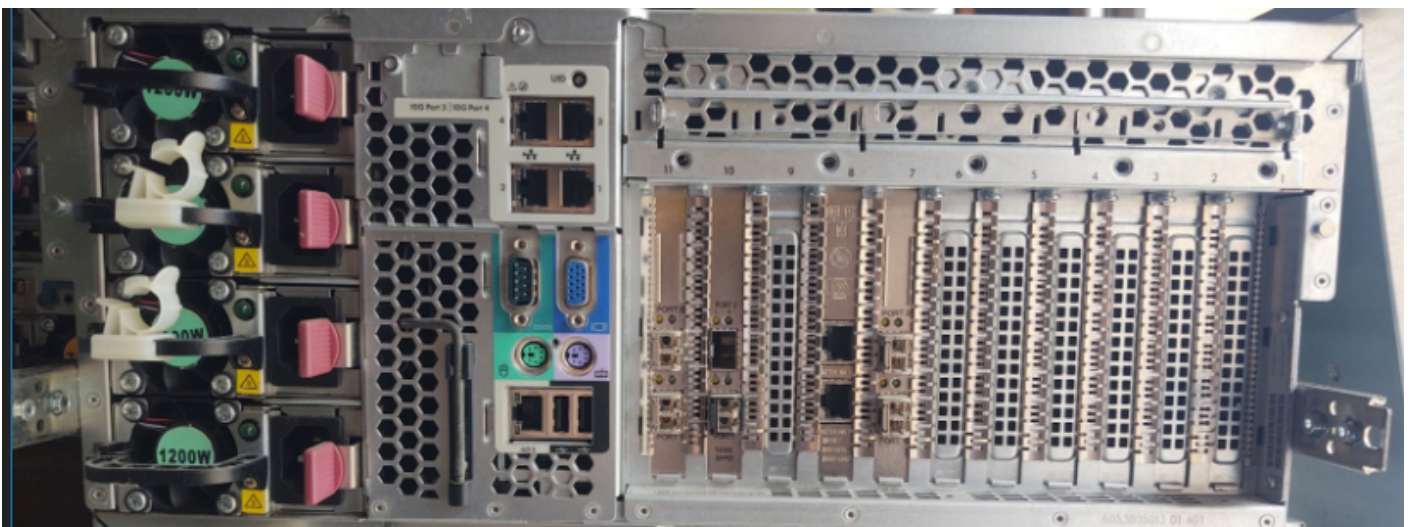


580-6 - HP 580 Gen 7 / 128GB / 8 - 146GB Drives

- 2 - Fiber Cards (8Gbit)
- 1 - 10GB FCoE adapter
- 1 - 1GB NIC



M-Based Setup Utility, Version 3.00
Copyright 1982, 2015 Hewlett-Packard Development Company, L.P.

System Options

Power Management Options
PCI IRQ Settings
PCI Device Enable/Disable
Standard Boot Order (IPL)
Boot Controller Order
Date and Time
Server Availability
Server Security
BIOS Serial Console & EMS
Server Asset Text
Advanced Options
System Default Options
Utility Language

HP ProLiant DL580 G7
S/N: USE2172X3V
Product ID: 643086-B21
HP BIOS P65 08/16/2015
Backup Version 10/01/2013
Bootblock 01/18/2011
Power Management Controller - 1.6

131072MB Memory Configured

Proc 1: Intel 2.27GHz, 24MB L3 Cache
Proc 2: Intel 2.27GHz, 24MB L3 Cache
Proc 3: Not Installed
Proc 4: Not Installed

Press <TAB> for More Information

Enter> to View/Modify System Specific Options
Press <ESC> to Exit Utility

128 GB Installed

ProLiant System BIOS - P65 (08/16/2015)
Copyright 1982, 2015 Hewlett-Packard Development Company, L.P.

Processor(s) detected, 20 total cores enabled, Hyperthreading is disabled
Proc 1: Intel(R) Xeon(R) CPU E7- 4860 @ 2.27GHz
Proc 2: Intel(R) Xeon(R) CPU E7- 4860 @ 2.27GHz
PI Speed: 6.4 GT/s
Power Profile Mode: Maximum Performance
Power Regulator Mode: Static High Performance

Revision #5

Created 10 October 2024 15:34:58 by Andy

Updated 16 November 2024 18:14:13 by Andy