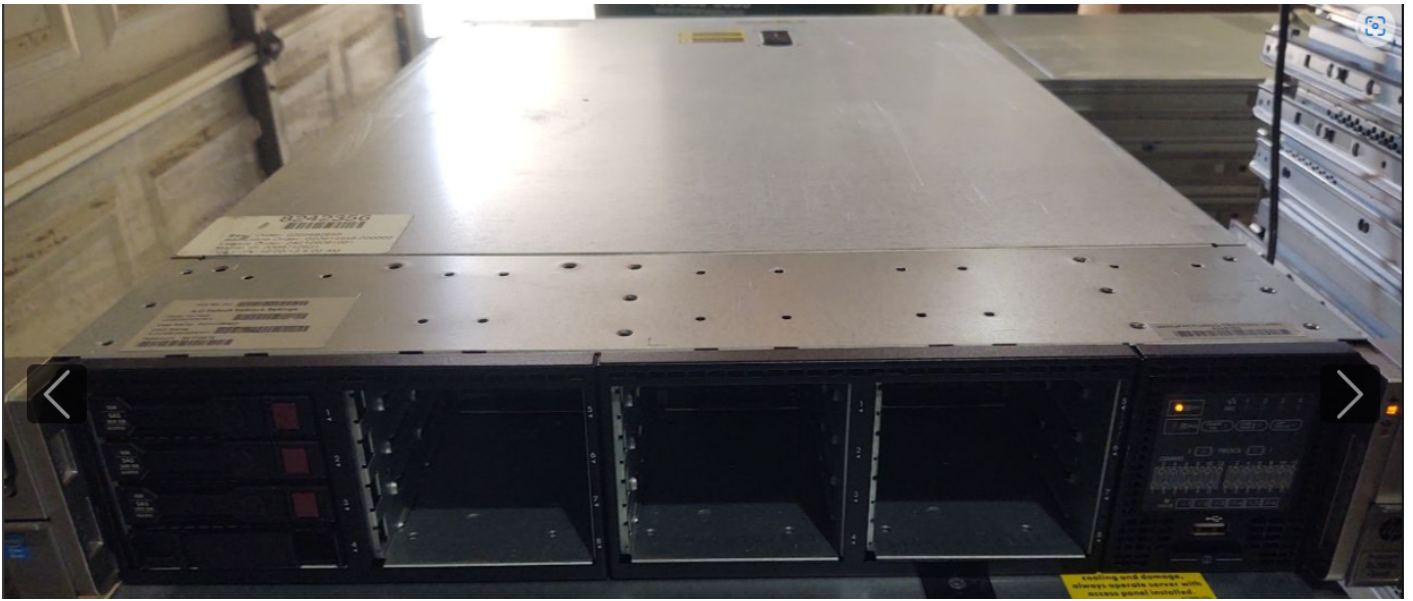
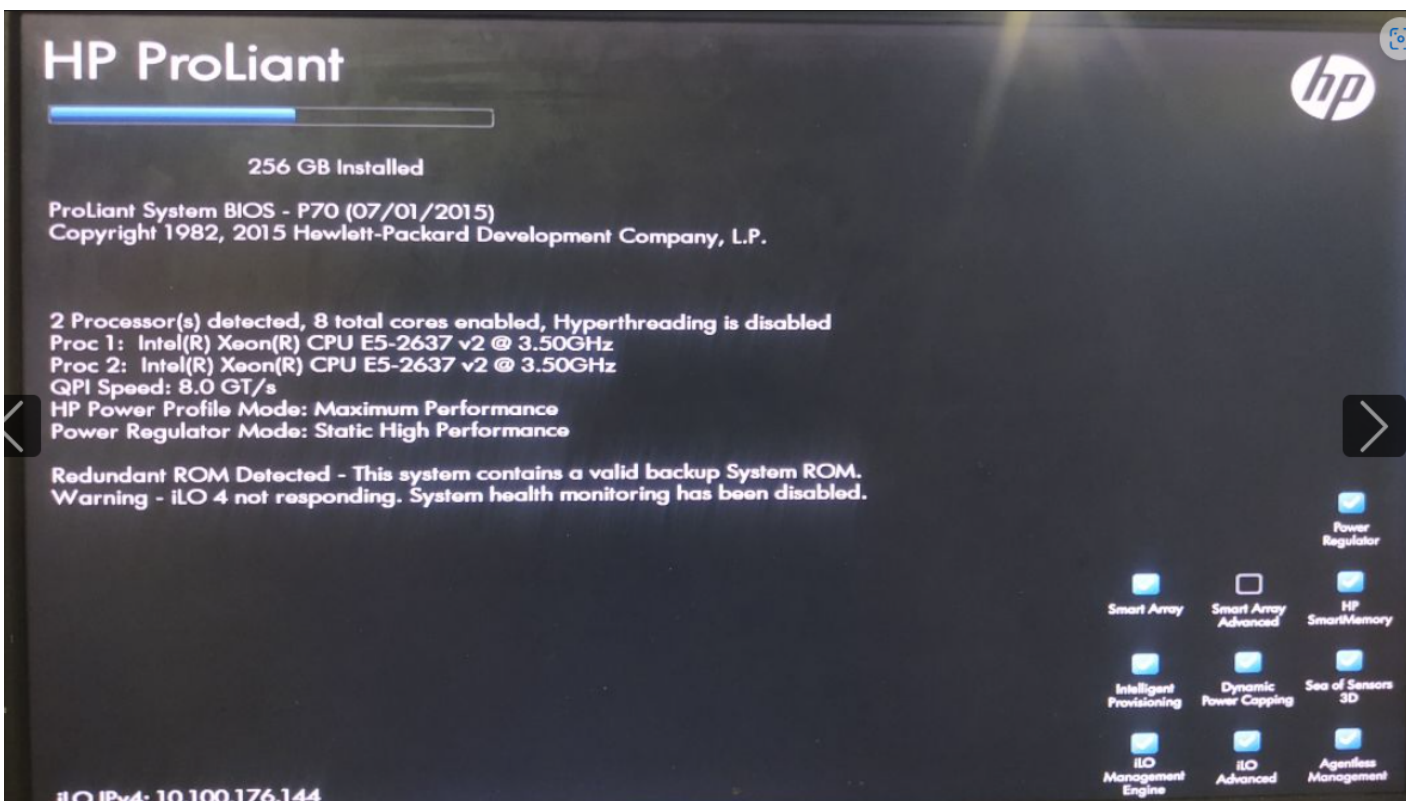
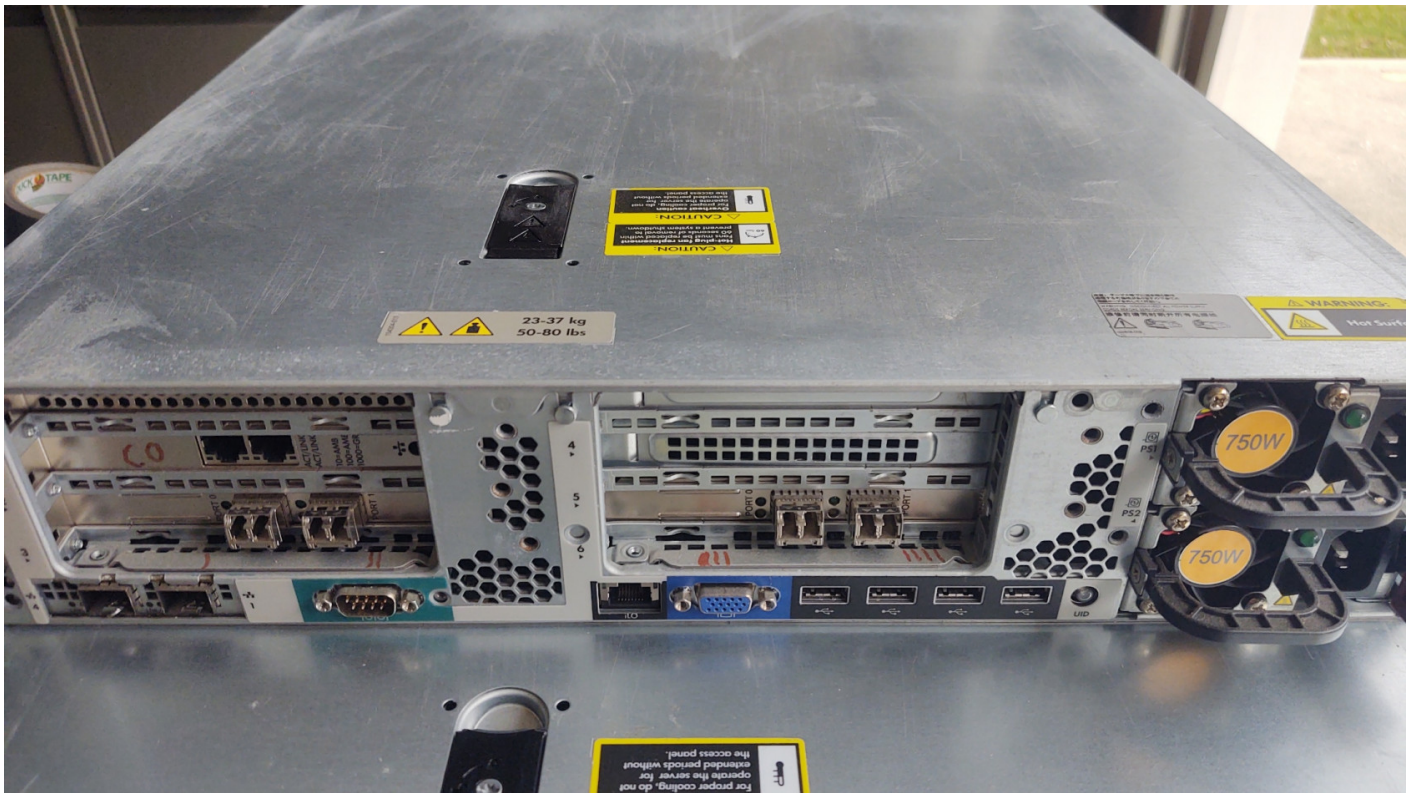


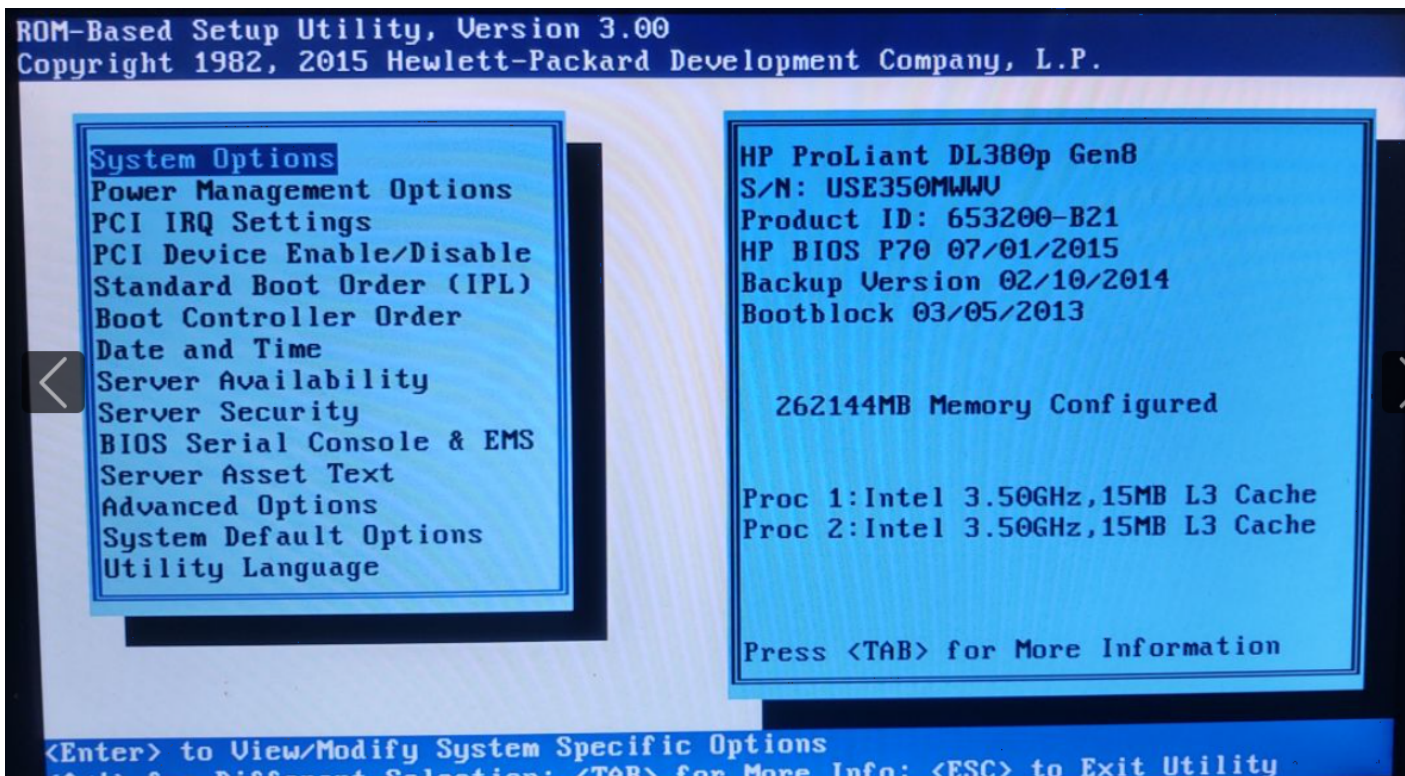
HPS380-4 - 380 Gen 8 / 256GB / 3 - 300GB drives

Drive config: Mirrored set with hot spare

10Gbit LOM Module, two Fiber Channel storage cards and extra NIC







Revision #2

Created 10 October 2024 16:07:12 by Andy

Updated 16 November 2024 17:29:47 by Andy