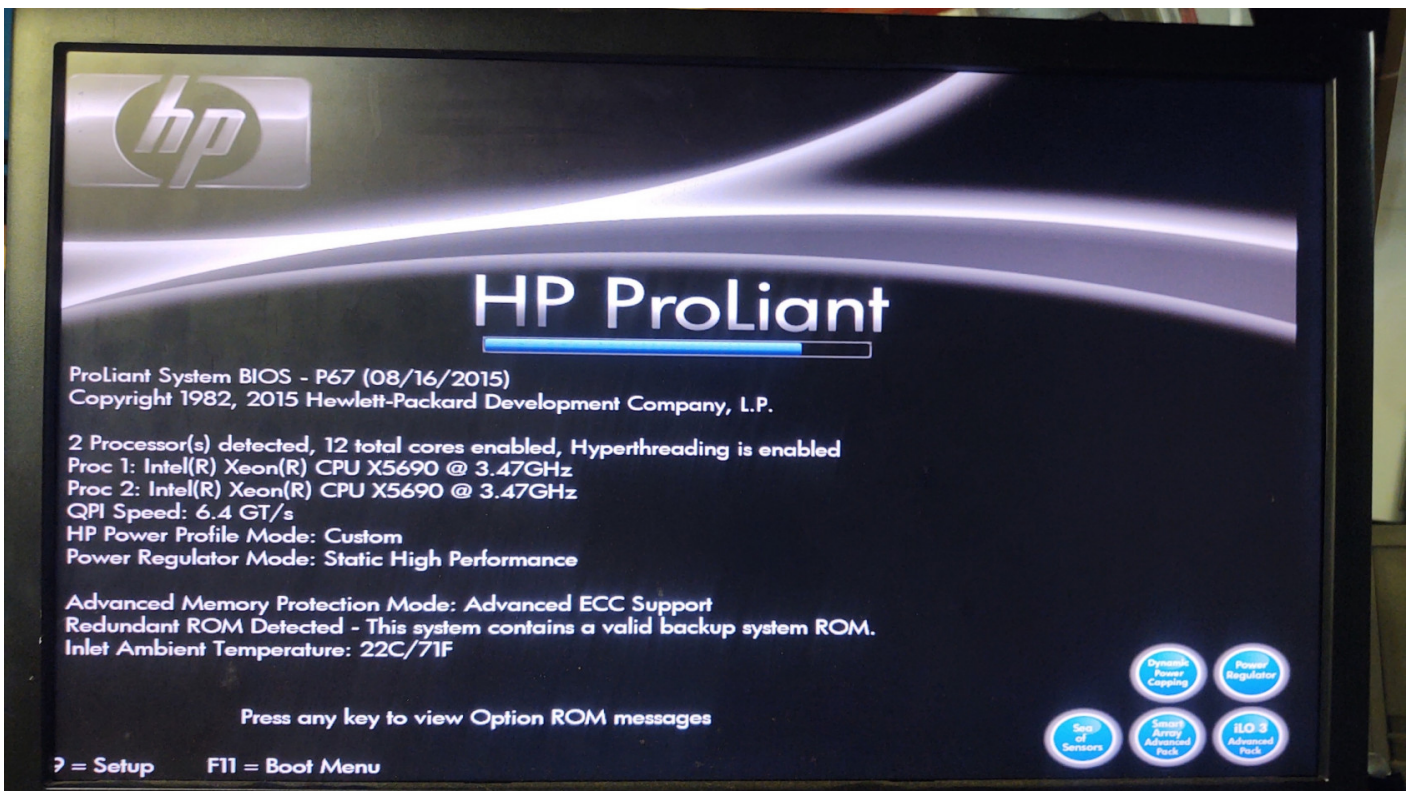
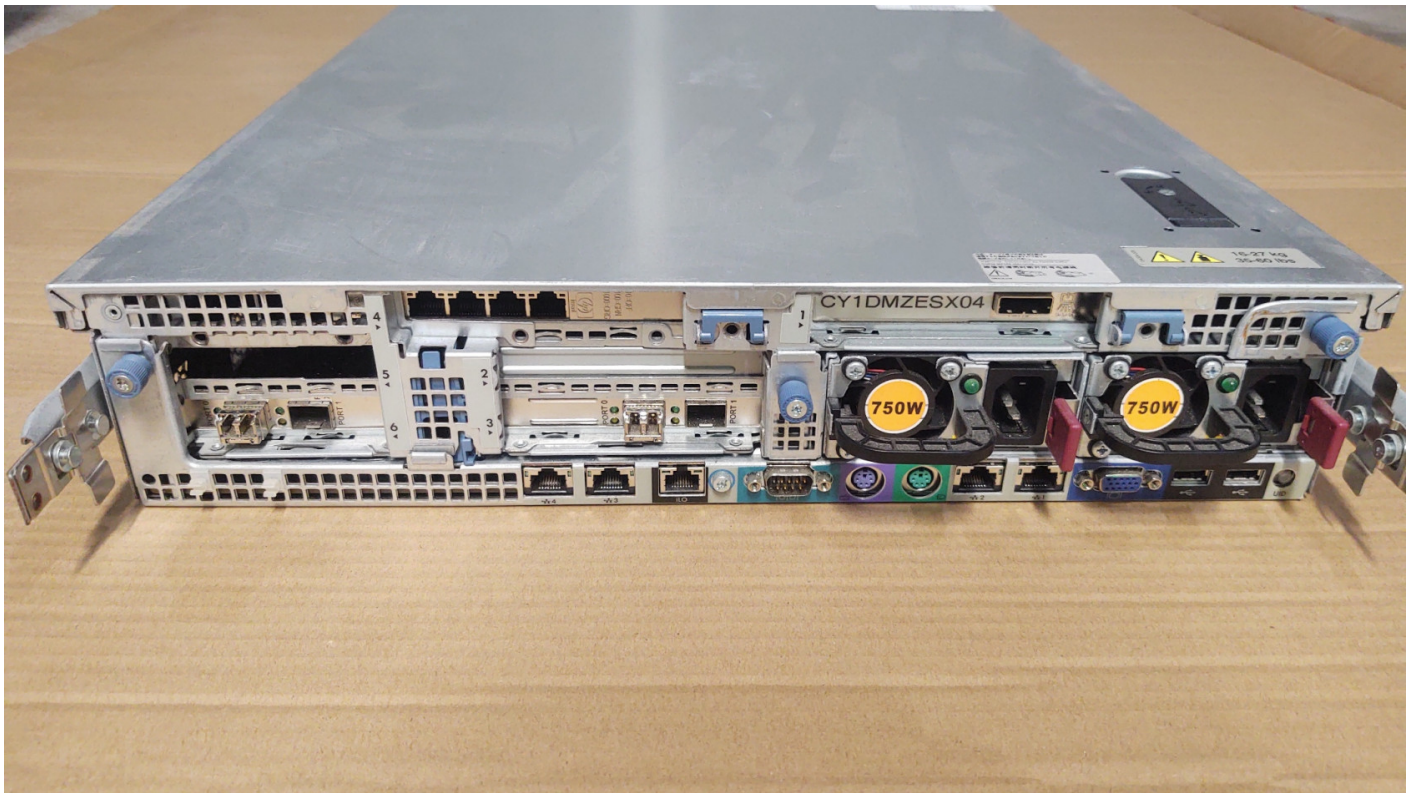


HPS380-5 - 380 Gen 7 / 192GB / 11.5TB (16 - 900GB SAS Drives)

Drive Config: 11TB - Raid 5 with hot spare

2 - 8GB FC Card, Extra 4 port NIC





ROM-Based Setup Utility, Version 3.00
Copyright 1982, 2015 Hewlett-Packard Development Company, L.P.

System Options

Power Management Options
PCI IRQ Settings
PCI Device Enable/Disable
Standard Boot Order (IPL)
Boot Controller Order
Date and Time
Server Availability
Server Security
BIOS Serial Console & EMS
Server Asset Text
Advanced Options
System Default Options
Utility Language

HP ProLiant DL380 G7
S/N: USE246MDT7
Product ID: 583914-B21
HP BIOS P67 08/16/2015
Backup Version 07/02/2013
Bootblock 02/18/2010
Power Management Controller - 1.6

196608MB Memory Configured

Proc 1: Intel 3.47GHz, 12MB L3 Cache
Proc 2: Intel 3.47GHz, 12MB L3 Cache

Press <TAB> for More Information

<Enter> to View/Modify System Specific Options
<↑/↓> for Different Selection; <TAB> for More Info; <ESC> to Exit Utility

ROM-Based Setup Utility, Version 3.00
Copyright 1982, 2015 Hewlett-Packard Development Company, L.P.

Ctlr:1	PCI Embedded	HP Smart Array P410i Controller
Ctlr:2	PCI Slot 3	HP StorageWorks 82E 8Gb PCI-e Dual Port FC HBA
Ctlr:3	PCI Slot 3	HP StorageWorks 82E 8Gb PCI-e Dual Port FC HBA
Ctlr:4	PCI Slot 6	HP StorageWorks 82E 8Gb PCI-e Dual Port FC HBA
Ctlr:5	PCI Slot 6	HP StorageWorks 82E 8Gb PCI-e Dual Port FC HBA

<Enter> to Select Mass Storage Controller
<↑/↓> for Different Mass Storage Controller; <ESC> to Close Menu; <F1> for Help

Revision #4

Created 19 November 2024 00:11:50 by Andy

Updated 19 November 2024 22:47:52 by Andy