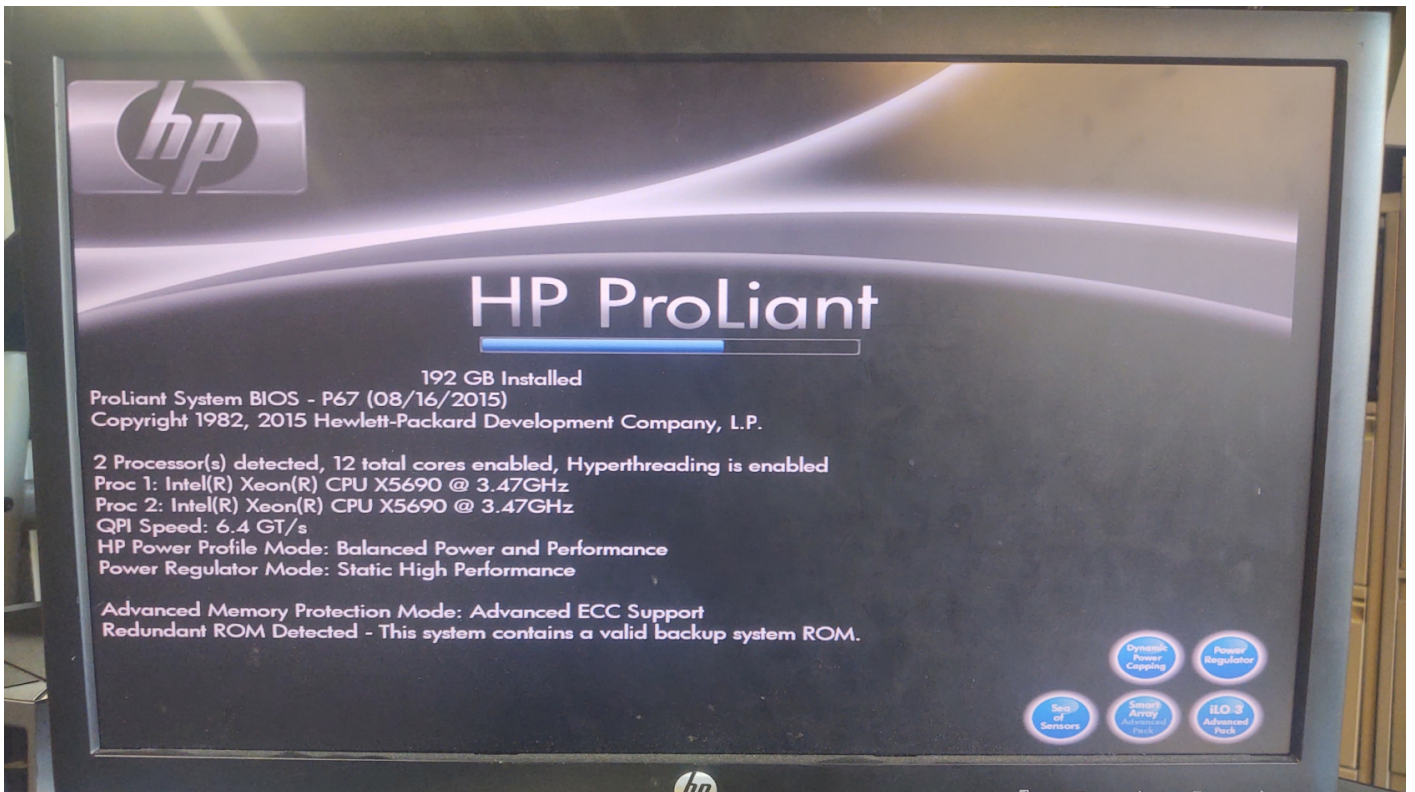
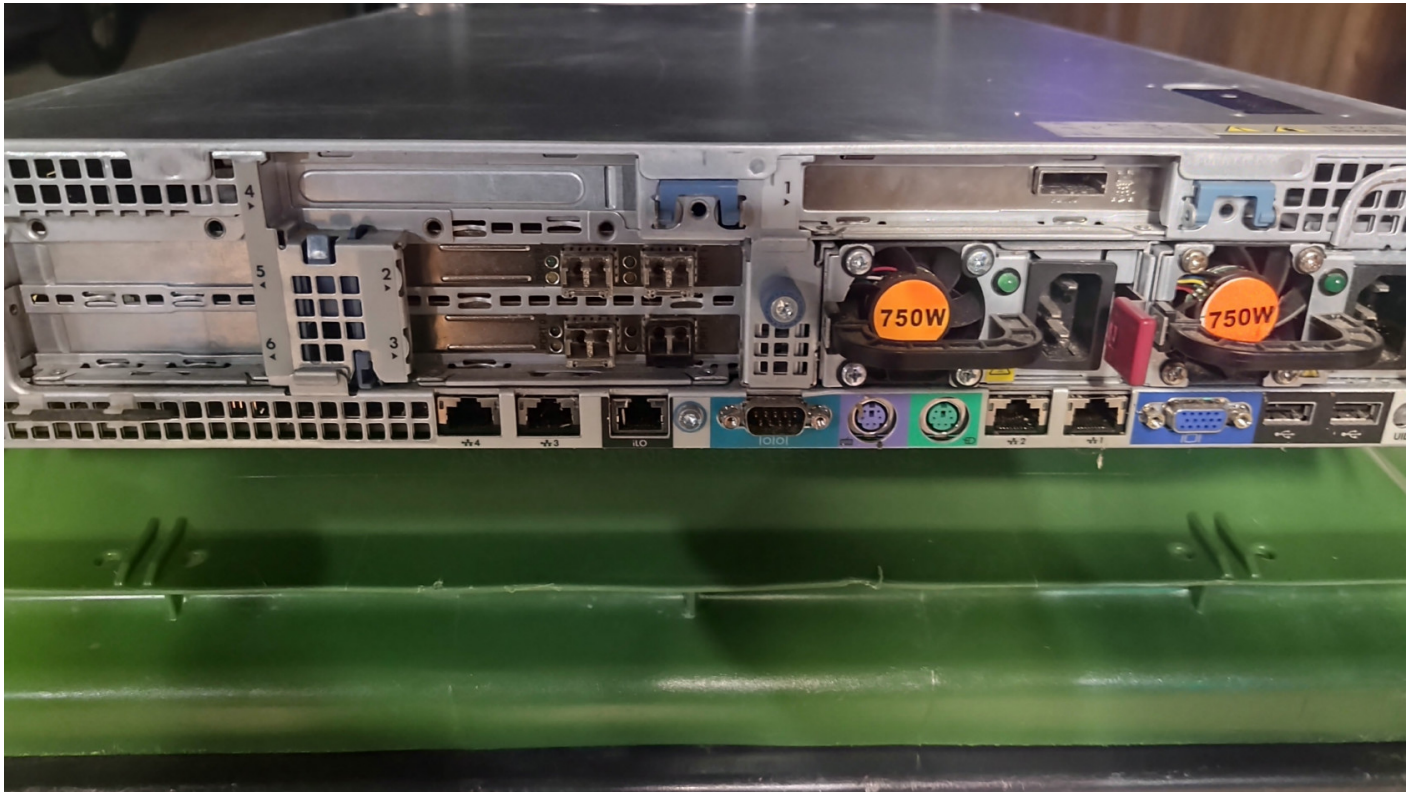


# HPS380-8 - 380 Gen 7 / 192GB / 11.5TB (16 - 900GB SAS Drives)

Drive Config: 11TB - Raid 5 with hot spare

2 - 8GB FC Card, Extra 4 port NIC







ROM-Based Setup Utility, Version 3.00  
Copyright 1982, 2015 Hewlett-Packard Development Company, L.P.

### System Options

Power Management Options  
PCI IRQ Settings  
PCI Device Enable/Disable  
Standard Boot Order (IPL)  
Boot Controller Order  
Date and Time  
Server Availability  
Server Security  
BIOS Serial Console & EMS  
Server Asset Text  
Advanced Options  
System Default Options  
Utility Language

HP ProLiant DL380 G7  
S/N: 2M221201MH  
Product ID: 633404-001  
HP BIOS P67 08/16/2015  
Backup Version 07/02/2013  
Bootblock 02/18/2010  
Power Management Controller - 1.6

196608MB Memory Configured

Proc 1: Intel 3.47GHz, 12MB L3 Cache  
Proc 2: Intel 3.47GHz, 12MB L3 Cache

Press <TAB> for More Information

<Enter> to View/Modify System Specific Options  
<↑/↓> for Different Selection; <TAB> for More Info; <ESC> to Exit Utility

ROM-Based Setup Utility, Version 3.00  
Copyright 1982, 2015 Hewlett-Packard Development Company, L.P.

PCI Embedded	HP NC382i PCIe DP Multifunction 1Gb Adapter Port 1&2	Disabled
PCI Embedded	HP NC382i PCIe DP Multifunction 1Gb Adapter Port 2	Disabled
PCI Embedded	HP NC382i PCIe DP Multifunction 1Gb Adapter Port 3&4	Disabled
PCI Embedded	HP NC382i PCIe DP Multifunction 1Gb Adapter Port 4	Disabled
PCI Embedded	Intel(R) SATA Controller #1	Enabled
PCI Embedded	HP Smart Array P410i Controller	Enabled
PCI Slot 2	HP StorageWorks 82E 8Gb PCI-e Dual Port FC HBA	Enabled
PCI Slot 3	HP StorageWorks 82E 8Gb PCI-e Dual Port FC HBA	Enabled

<Enter> to View/Modify PCI Device Configurations  
<↑/↓> for Different PCI Device; <ESC> to Close Menu

Revision #3

Created 21 November 2024 22:49:32 by Andy

Updated 22 November 2024 00:10:39 by Andy