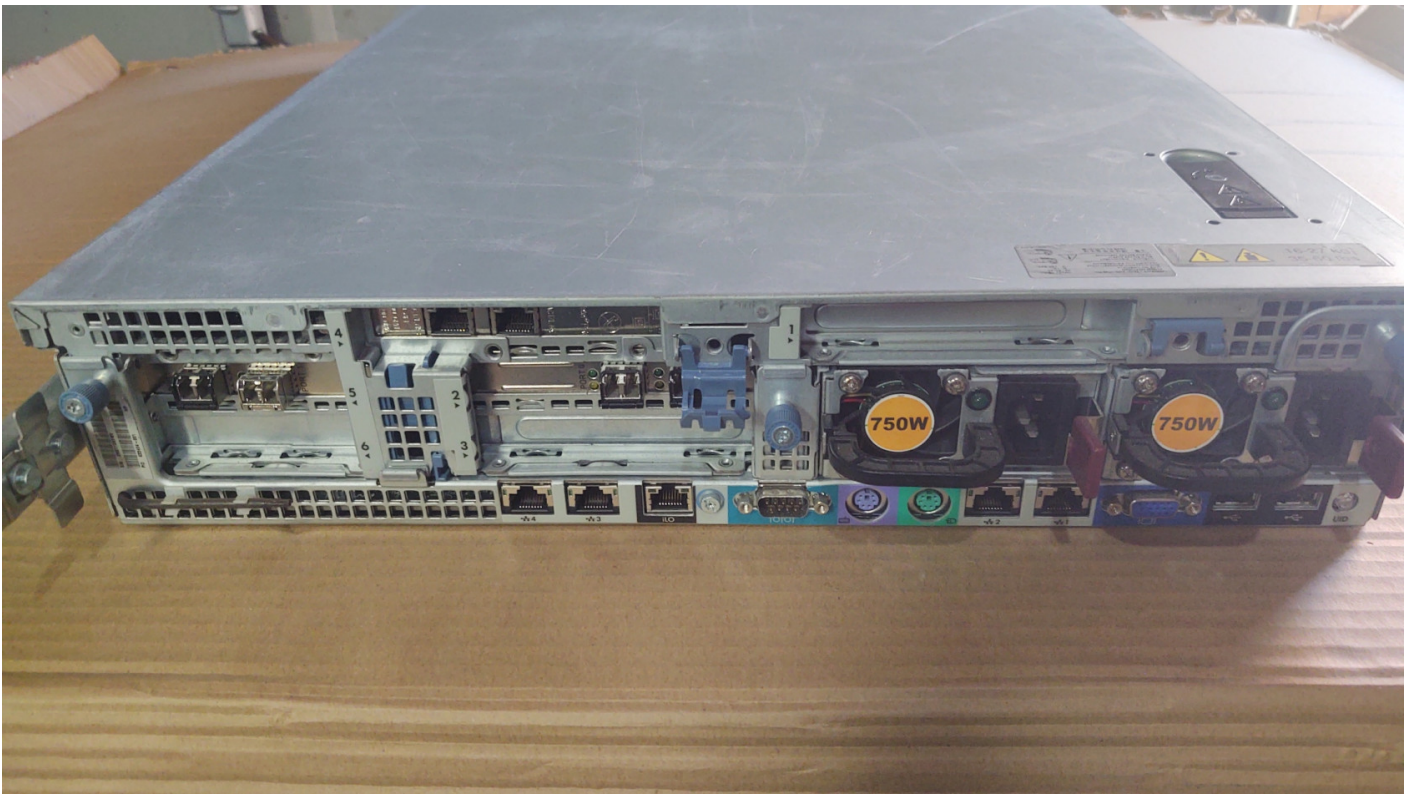


# HPS380-9 - 380 Gen 7 / 96GB / 2 - 200GB SSD and 6 - 300GB SAS)

Drive Config: Mirrored OS (200) and Raid 5 (300's) 1.5TB

2 - 8GB FC Card, Extra 2 port NIC





on Based Setup Utility, version 3.00

Copyright 1982, 2015 Hewlett-Packard Development Company, L.P.

### System Options

- Power Management Options
- PCI IRQ Settings
- PCI Device Enable/Disable
- Standard Boot Order (IPL)
- Boot Controller Order
- Date and Time
- Server Availability
- Server Security
- BIOS Serial Console & EMS
- Server Asset Text
- Advanced Options
- System Default Options
- Utility Language

HP ProLiant DL380 G7

S/N: 2M211000WU

Product ID: 633404-001

HP BIOS P67 08/16/2015

Backup Version 07/02/2013

Bootblock 02/18/2010

Power Management Controller - 1.6

98304MB Memory Configured

Proc 1: Intel 3.47GHz, 12MB L3 Cache

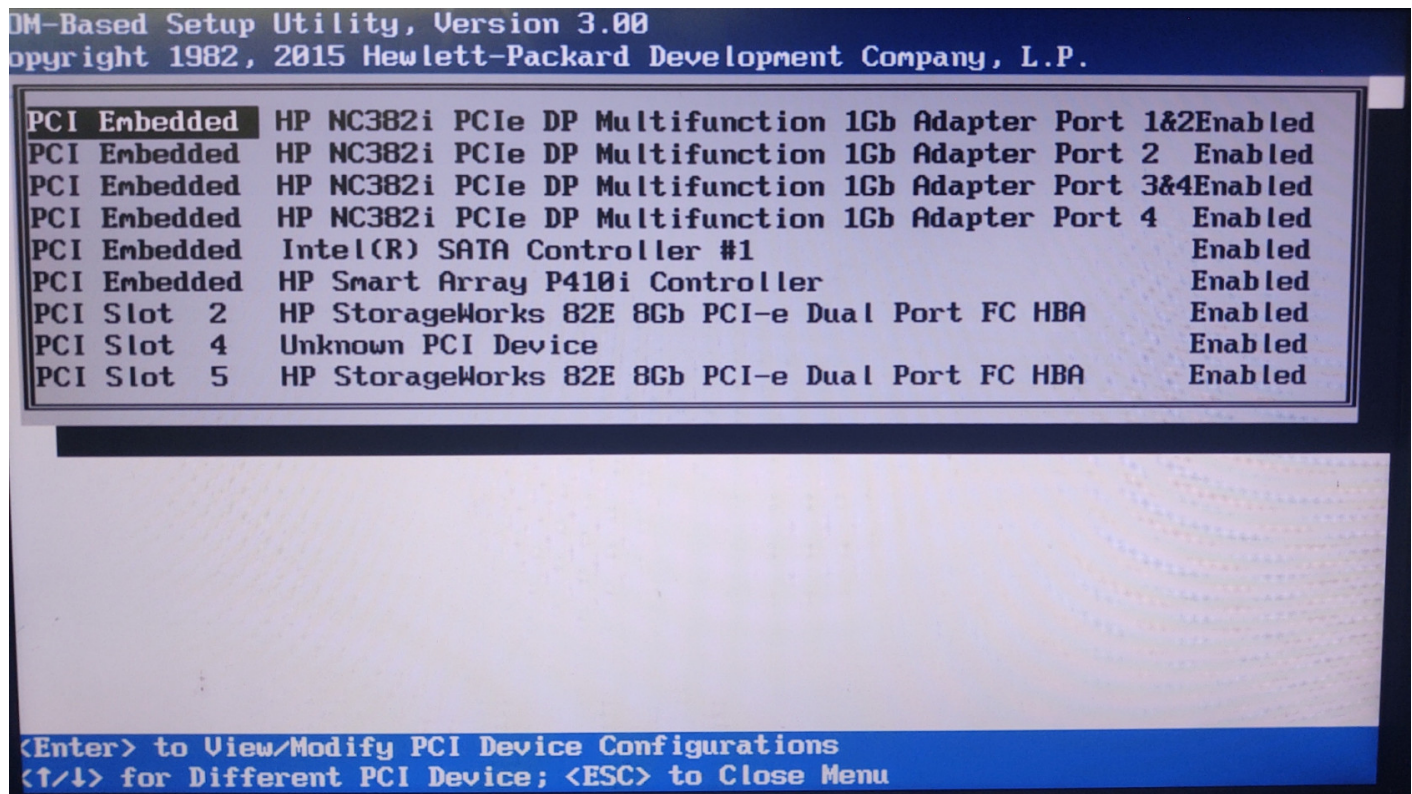
Proc 2: Intel 3.47GHz, 12MB L3 Cache

Press <TAB> for More Information

<Enter> to View/Modify System Specific Options

<↑/↓> for Different Selection; <TAB> for More Info; <ESC> to Exit Utility





Revision #3

Created 29 November 2024 21:05:03 by Andy

Updated 12 December 2024 21:25:54 by Andy